



FormAL[®]
Medical

Hospital Seating
and Medical
Furniture Suppliers

Free Demos
Finance Solutions
Hospital Discharge
& Admission Contracts
Nationwide

Contents

Our Story	02
Common postural abnormalities	04
Hospital discharge planning	05

Hospital Seating & Medical Furniture

Align® Ward	06
Align® Tilt	07
Florien Elite	08
Duo	09
Florien II	10
Hydrotilt	10
Smartseat Pro	11
Hydroflex	11
Align® Comfort	12
Align® Porter	12
Align® Sleeper	12
Align® Recliner	13
Align® Transport	13
Align® Waiting Room Seating	13
Omega	14
Stirling	14
G2	14
How we can help you	15

Our Story

Our founder, originally entered the Healthcare industry in December 1983 and over the years we established a far-reaching range of products to assist disabled and elderly people. As the brand and customer experience became increasingly well known, the company grew and products were launched.

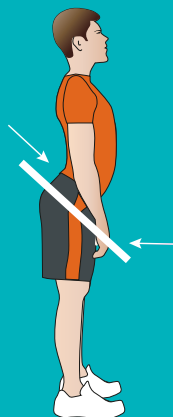
35 years on, the same family owns the company and the team at FormAL Medical continues to deliver that same uncompromised level of service, delivering medical furniture for the hospital and care market. Our brand Align® was born out of our many years in the healthcare market and represents our genuine desire to deliver the best solutions for the best care here in the UK.

Our wealth of experience and true understanding of care has led us to continually improve the company to ensure our customers receive an ever-enhancing level of service within their hospital care environment. Our customers have proved the benefit of the dedication and focus, over many years in this area of support. Our passionate and dedicated team will continue to care for the needs of our ever-growing number of customers.

We look forward to your call.

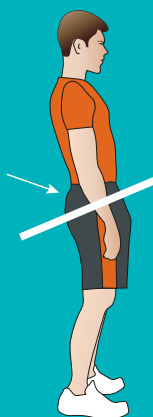


Common postural abnormalities



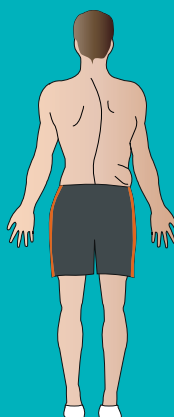
Anterior tilt

- Pelvis tilted forward
- Exaggerated lumbar curve
- Shoulder blades retracted
- Eyes upwards
- Reduced upper limb function



Posterior tilt

- Pelvis tilted backwards
- Rounded shoulders
- C-shaped spine
- Eyes downwards
- Reduced space in chest cavity



Scoliosis

- Spine compensates by twisting to get back to mid-line
- Abnormal S-shaped lateral curvature of the spine

Other postural abnormalities to look out for include:

Kyphosis

Excessive outward curvature of the spine, causing forward flexion of the spine.

Lordosis

Excessive inward curvature of the spine.

Windsweeping

Characterized by both legs being thrown in the same direction.

Contractures

Shortening and hardening of muscles, tendons, or other tissue that leads to deformity and rigidity of joints.

Pelvic obliquity

Imbalance in the level of the hips causes tipping and increases pressure on hips.

Pressure care

Pressure damage occurs when there is an interruption to the supply of oxygen and nutrients via the circulatory system, and this can be caused by many different factors.

Factors causing damage:

- Direct pressure
- Force concentrated on a small area
- Friction and Shearing
- Layers of skin rubbing over each other
- Sliding down beds and chairs

Beware: Poor technique in manual handling.

Other contributing factors:

- Incontinence
- Poor nutrition
- Moisture build up
- Prolonged time spent sitting
- Temperature

Look for the signs:

- Blanching
- Red patches
- Hollowness

Remember:

Pressure sores can appear on almost any part of the body, but the most common places to monitor regularly are the buttocks and sacrum, feet and heels, elbows and knees.

Hospital discharge planning

When patients become discharge ready, so often delays are experienced sourcing relevant care packages, adapting of properties or assessing for equipment to ensure long term needs have been met and covered for the next phase of patient care.

There's power in 3

Sometimes planning a discharge process is a very time critical and stressful time for all staff involved.

Let's keep this simple:



Reduce length of stay

Pre-planned discharge schemes have proved that discharge can happen much quicker and delayed discharges become a thing of the past.



Maintain efficiency

Making sure the scheme chosen is the right one to ensure long term care is a vital focus. Regular touch points and reviews can be set up along the way to train, maintain and support.



Reduce re-admission

Meeting clinical needs is vital to prevent hospital re-admission. Potential changes in patient needs must be considered and an integral part of the plan.

It's all included, one package

Managing this whole process under one contract, supported by experts here at FormAL, from design and set up to on-going maintenance and tracking systems.

It couldn't be simpler!



**MOST
POPULAR**



Key features:

Compact for ward use

Unique rear wheel system

Drop down armrest

Height adjustment

Align® Ward

The Align® Ward Chair has been designed to be compact for ward and bedside use. It has a unique rear wheel system for movement so its easily positioned without having to lift the chair itself.

The Ward Chair benefits from a metal frame and unique arm rest which has a drop-down feature and allows patients to side transfer if necessary.

There are various height adjustments which make it perfect for a range of patients and their visitors.



MOST POPULAR

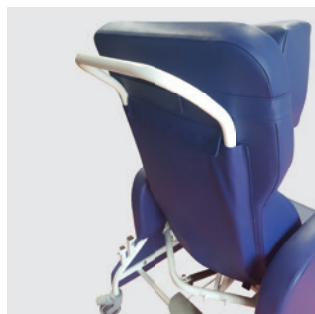
Key features:

Tilt in space

Porter base with significant clearance

Compatible with hoists

Easily removable upholstery



Align® Tilta

The Align® Tilta has the essential feature of Tilt in Space, allowing real comfort, support and pressure care. This always allows patients to be positioned in a safe way, a perfect solution for your patients that have an unstable blood pressure or who are struggling to hold their seating balance – at the same time the Tilta will distribute pressure evenly throughout the body.

The Tilta has a porter base which has significant clearance to allow moving and handling equipment close to the chair. The upholstery is easily removable for cleaning.

The Tilta also benefits from modular parts which allows for easy maintenance and replacements in the future.

Accessories include:

Tray, catheter bag holder, IV pole and side supports (laterals)

**MOST
POPULAR**



Key features:

High level of pressure care integrated into seat module

Manual gas-spring assisted tilt-in-space

Manual gas-spring assisted back angle recline with positional lock

Elevating legrest

Swivel-back armrests

Multi-positioning integral headrest

Adjustable seat width

Adjustable seat length

Modular replacement of components

Florien Elite

With both tilt-in-space and back angle recline functionality the Florien Elite also has a choice of two backrests, Waterfall or Contoured to meet the needs of different care settings.

The unique dynamic upholstered arms float across the seat to achieve the appropriate seat width for each user. Moreover these arms have the ability to swivel backwards to effect a side transfer or easier hoist access. With a host of options and accessories to choose, the Florien Elite is a very versatile seating solution.



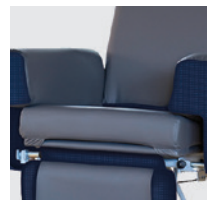
Manual
tilt-in-space



Waterfall or
Contoured Backrest



Elevating
Legrest



Seating Width
Adjustable

MOST POPULAR

Key features:

Removable arms for easier side transfers

Integral head support

Standard 25 degree of negative tilt position on legrest for restricted leg movement

Pressure care options

Range of size options

Tilt-in-space action

Backrest recline adjustment

Unique integral flexible backrest supports

Optional independent lateral supports

Optional unique negative legrest to accommodate contracted knee angle

Knee pommel available to prevent knee adduction

Leg lateral system available to encourage an in-line position

Contoured back rest option

Length compensating legrest

Completely adjustable within the one frame including back height and arm height

Manual and battery operation option



Duo

The Duo offers high levels of postural support. The dynamic features of the Duo enable it to accommodate changing needs of the individual whilst providing excellent postural control and comfort.

The cleverly designed negative legrest option means this is a great solution for users with lower-leg contractures and limited range of movement.



Manual
tilt-in-space



Adjustable
Footplate



Elevating
Legrest



Negative
Legrest Angle



Florien II

A dynamic and highly mobile seating system, the Florien II enables greater independence by promoting correct posture and facilitating a supportive, comfortable seated position. The Florien range has the removable arms facilitating side transfer and easy hoist access whilst the negative forward tilt assists with standing transfers.

Unique features including an ergonomically moulded backrest and modern styling make this an excellent solution for a wide variety of users and environments.

Key features:

- Available with high level of pressure care
- Manually operated tilt-in-space positioning
- Legrest elevation
- Removable arms for easy hoist access, side transfer or changing seat width
- Articulated integral head support
- Comfortable moulded backrest
- 25° negative angle legrest



Hydrotilt

The Hydrotilt offers a very effective and modular solution when it comes to pressure management and postural support.

The WaterCell Technology system offers a high level of pressure care with the added tilt-in-space mechanism to enhance its effectiveness. The seat width and seat depth can be adjusted very simply within the one frame making the chair an ideal product for multi-use environments. The modular system means that the chair can be stripped down for hygiene and infection control. Additional postural management accessories can be fitted and retro-fitted to the product as needs change.

Key features:

- Tilt-in-space action with elevating legrest
- High pressure relief as standard
- Optional additional lateral supports
- Flip-up angle adjustable footplate as standard
- 25° negative angle legrest



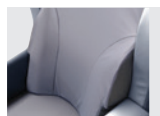
Channel Legrest



Flip-Up Angle Adjustable Footplate as Standard



Motorised Option



Contoured Back Rest



Profiled Headrest



SmartSeat Pro

The level of flexibility offered by the four part backrest ensures the SmartSeat Pro can be easily configured to suit individual needs, aiding pelvic stability as well as trunk and head alignment. The individual backrest components can be quickly and easily adjusted to ensure that a range of postural asymmetries such as kyphosis, lordosis and scoliosis, can be fully supported, stabilised and, where possible, corrected from the sacrum to the cervical spine.

The unique multi-adjustable back has three upper backrest components which can be altered in height, depth, angle, offset and rotation, to suit the user's needs. Each of these upper elements include built-in adjustable wings which can be individually positioned to contour the seat back to the user's shape. For those with complex postural needs, neurological conditions, dementia care, head and spinal cord injuries and stroke rehab.

Key features:

- Tilt-in-space for posture and pressure care management
- Unique four-part back
- Multi-adjustable backrest
- Back angle recline
- Built-in adjustable wings
- Well-proven WaterCell technology for medium to high levels of pressure care



Hydroflex

The Hydroflex has been designed with the stroke and rehabilitation market in mind. With the existing "Watercell" technology pressure management system from the Hydrotitl, back angle recline and tilt in space along with the comprehensive range of accessories, means the chair can accommodate specific postural requirements or form part of a rehabilitation programme.

Key features:

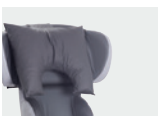
- Tilt-in-space action
- Manual and battery operation option
- Optional regulated motion model to increase pressure care
- Choice of headrests
- Length compensating legrest to enhance ultimate positioning of the calves and ankles
- Option of built-in lateral supports
- Optional additional lateral support system
- Paediatric sizes available



Flip-Up
Footplate



Adjustable Lateral
Supports



Profiled Headrest



Channel Legrest



Align® Comfort Chair

The Align® Comfort chair is designed with a unique shaped foam to allow for maximum comfort levels and ensures a maintained skin temperature which will assist with pressure relief.

The Comfort chair has many options and can be Factory built with drop arms if required. This chair is compact and designed for smaller wards and spaces within the care environment.

Key features:

- Maximum comfort levels
- Assists with pressure relief
- Drop arms
- Very compact foot print



Align® Porter Chair

The Align® Porter chair is the perfect solution for safely moving patients from ward to ward without compromising comfort and dignity. The Porter comes with a metal frame and durable base.

The modern style of the Porter can be created to suit the specific ward and décor styling.

Speak to us to talk about the bespoke options available for your ward or care setting!

Key features:

- Metal frame and durable base
- Modern styling
- Perfect for moving patients from ward to ward
- Bespoke options available



Align® Sleeper Chair

The Align® Sleeper provides three relaxed positions; a seated position, a reclined position with an extended footrest or a sleeping position (flat).

The headrest can be adjusted dependant on the user height and current needs. The Sleeper is easily adjusted to its varied positions, by pulling on the footrest.

Key features:

- 3 relaxing positions
- Extended footrest
- Adjustable headrest
- Easy to spread to sleeping position





Align® Recliner Chair

The Align® Recliner chair has been designed to offer support to multiple users within care environments and is the perfect solution to provide comfort to your patients and visitors.

The simple, yet robust recliner offers durable foam to ensure comfort as well as durable covers which are wipe clean. This model is available as a static base or can include small porter wheels for movement around the care setting.

Key features:

Reclining

Wipeable covers

Durable foam to ensure comfort and durability

Available as a static base or small porter wheels



Align® Transport Chair

The Align® Transport chair is the perfect solution for patient transportation. With various adjustment, the patient is able to be comfortably positioned without compromise.

Key features:

Robust frame for durability

Large wheels for ease of movement

Recline action

Footplate

Optional IV pole attachment

Central pedal brake for ease of use

Wipe clean surfaces – effective for infection control

Quality covers and foam for comfort and longevity

Bariatric sizes available



Align® Waiting Room Seating

The Align Waiting Room System is designed to be customised to meet your needs, design theme and your available space.

This bespoke solution allows each area/environment to be completely unique to your care setting.

From dual seating to a variety of frames there is plenty of choice! Speak to a member of the team today to discuss your plans!



Omega

Comfort and security underpins the Omega, aiming to provide a robust, durable chair that can withstand demanding and severe movements. The chair has been specifically designed for those suffering from conditions such as Huntington's disease and other such neurological conditions.



Key features:

Strong frame with five year guarantee

Large castor wheels for ease of manoeuvrability

Detachable block foam legrest

Three seat widths available

Variable seat angle with proportionally adjustable back rest recline

Low centre of gravity

Stirling

These chairs are a cost effective system to create a safe seating solution for many. The seating area is fixed in one backward tilted position. This position prevents slipping down the chair thus reducing shear forces and friction whilst increasing pressure distribution.



Key features:

Cost effective system

Safe seating position

Fixed tilted angle provides basic postural support

Ideal for hospital bedside use

Integral lateral supports

Headrest options

Sliding footrest available

Available with tray

Made to measure

G2

The G2 has been designed to meet the pressure care needs of patients sitting for longer periods of time, who have a limited degree of movement or muscle tone. With integral pressure relief and the dependable tilt-in-space feature, the G2 will assist with pressure care management programmes.



Key features:

Built-in pressure care options

Evidence-based articulating, supportive backrest

Unique helical-motion lateral supports

Immersive comfort in seat and back aiding pressure management

Length compensating legrest design

Multi-directional stretch, breathable Dartex material on all user contact surfaces

Good access for patient lifting hoist system

Range of size options

How we can help you

Client specific assessments & audits



FormAL[®]
Medical



Nationwide coverage



Hospital discharge contracts



On site audits



Express delivery service



Care home group support contracts



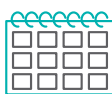
Maintenance contracts



Trial schemes



Bespoke solution packages




Rental solutions



In-house training

Discuss your needs with our specialist team

01473 463 900 - sales@formalgroup.co.uk



Contact our team to discuss how
FormAL can support your organisation:

01473 463 900

sales@formalgroup.co.uk

felgainsformal.com

FormAL Group Ltd - Unit 7 Liberator House, Clopton Park, Clopton, Woodbridge, IP13 6QT